

**ART CLAY** SILVER

# CATALOGUE VOL 4

## 2012

April 25, 2012



SILVERLAB PTY LTD  
0411 881 127  
sales@silverlab.com.au  
<http://www.silverlab.com.au>

## ART CLAY SILVER 650 SERIES

### 1. CLAY TYPE

- 650 series can be fired as low as 650°C
- It shrinks only 8 to 9 percent after firing
- It can be fired with sterling silver or glass
- Most shaping is done with this type. Wad it up and roll it out flat modeling clay
- 99.9% silver after firing



7g  
A-052 \$32



10g  
A-053 \$45



20g  
A-054 \$85



50g  
A-075 \$205

### 2. PASTE TYPE

- Adhere Art Clay Silver unfired pieces together
- Fill in cracks in unfired pieces
- Draw patterns
- Paint directly onto leaves, paper, etc.
- 99.9% silver after firing



10g  
A-066 \$42



20g  
A-067 \$78

### 3. SYRINGE TYPE



- Create fine, detailed lines by applying the silver clay through the syringe tip. A variety of tips are available (Narrow, Medium, Wide).
- 99.9% silver after firing



A-069	10g / no nozzle	\$49
A-068	10g / 1 nozzle (medium)	\$52
A-076	10g / 3 nozzles	\$59
A-070	5g	\$30



Prices are GST inclusive.  
All prices may be varied without notice.  
CATALOGUE VOL4, 2012  
©SILVERLAB PTY LTD 2008. All rights reserved.

#### 4. SILVER OVERLAY PASTE



- Formulated specifically to use on glazed surfaces such as glazed porcelain, glass, china, etc.
- 99% silver after firing



15g  
A-044 \$75

### ART CLAY SILVER 650 SLOW DRY SERIES

#### 1. CLAY TYPE

- 650 Slow Dry series can be fired as low as 650°C
- It shrinks only 8 to 9 percent after firing
- The moisture formula allows for braiding, weaving, and generally gives the artist up to 4 times more working time.
- 99.9% silver after firing



7g  
A-147 \$32



10g  
A-148 \$45



20g  
A-137 \$85



50g  
A-139 \$205



Prices are GST inclusive.  
All prices may be varied without notice.  
CATALOGUE VOL4, 2012  
©SILVERLAB PTY LTD 2008. All rights reserved.

## ART CLAY ORIGINAL SERIES

### 1. PAPER TYPE



10g  
A-105 \$52

- No need to dry. Can be folded. Perfect for ORIGAMI
- Fires at 800°C for 30 mins



### 2. OIL PASTE TYPE



10g  
A-024 \$68

- Repair fired Art Clay Silver pieces, attach two fired pieces together and / or attach silver findings to fired silver pieces together
- Fires at 850°C for 10 mins

### 3. GOLD / K22



3g  
A-123 \$480

- Can be shaped like clay type or used as gold paste
- Fires at 990°C for 60 mins



### 4. Art Clay Gold Paste



1.5g  
A-024 \$248

- Net.1.5g <Au 77.5%>
- Art Clay Gold Paste is in a viscous liquid form, so that you can add texture or draw directly on the surface of Art Clay Silver (fired piece), ceramic, porcelain and/or glass.
- This product has 77.5% of indicated weight is 24-Karat gold, and it becomes 22-Karat gold after firing. Art Clay Gold Paste comes in two bottles. One has 1.5gm of thick paste; the other contains a 5ml medium that is used to dilute the paste to a more workable consistency on glazed surfaces.
- Fires at 800°C. The holding time will vary depending on the combined material



Prices are GST inclusive.  
All prices may be varied without notice.  
CATALOGUE VOL4, 2012  
©SILVERLAB PTY LTD 2008. All rights reserved.

## Kits

### Starter Set



**A-0166K \$135**

ITEM#	Description	QTY
<b>Material</b>		
	ACS 650 Slow Dry 10g	1
<b>Tools</b>		
	Ring Size Scale	1
	Polishing cloth	1
	Silver polish (5cc)	1
	Liver of sulfur (6cc)	1
	Sponge sanding pad #320-600 / 5.8x3.3cm cut	1
	Sponge sanding pad #800-1000 / 5.8x3.3cm cut	1
	Sponge sanding pad #1200-1500 / 5.8x3.3cm cut	1
	Stainless Steel Brush (Short Bristles) w/ACS logo	1
	Medium Fine File w/ACS logo	1
	Burnisher (small) w/ACS logo	1
	Tweezers w/ACS logo	1
	Wooden Mandrel (separated) w/ACS logo	1
	Stainless net w/protection cage & frame	1
<b>Instruction</b>		
	DVD "Art Clay Silver Basic Tips & Techniques"	1
	12 projects manual	1

### Starter Set (Pendant Kit)



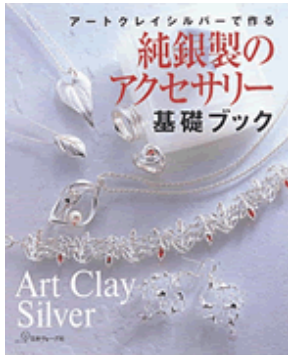
**A-094K \$88**

Instruction Manual  
 Instruction for stovetop firing (English)  
 ACS 650 Slow Dry Clay 7g x 1  
 Roller  
 Plastic strips (1.5mm thick)  
 Sponge sanding pad #320-600 1/8  
 Sponge sanding pad #800-1000 1/8  
 Sponge sanding pad #1200-1500 1/8  
 Stainless Steel Brush  
 Burnisher  
 Silver polish (net : 10g tube)  
 Polishing cloth  
 Sulphurizing solution (6cc)  
 Round jump ring  
 Charm holder  
 Stainless net w/protection cage & frame  
 Tweezers

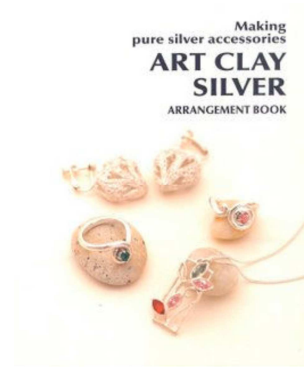


Prices are GST inclusive.  
 All prices may be varied without notice.  
 CATALOGUE VOL4, 2012  
 ©SILVERLAB PTY LTD 2008. All rights reserved.

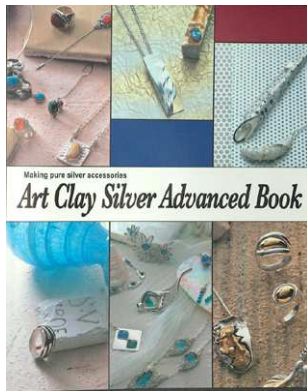
## BOOKS & VIDEO



Art Clay Silver Basic Book  
(English)  
**S-048-EG \$38**



Arrangement Book for Certification Course  
(English)  
**S-167-E \$38**



Art Clay Silver Advanced Book  
(English)  
**S-138 \$38**



Prices are GST inclusive.  
All prices may be varied without notice.  
CATALOGUE VOL4, 2012  
©SILVERLAB PTY LTD 2008. All rights reserved.

## TOOLS & MATERIALS



File(fine)  
F-021 \$9



File(medium fine)  
F-020 \$9



Agate Burnisher  
R-036 \$18



Stainless steel brush(short bristles)  
F-030 \$9



Wooden Ring Mandrel  
F-026 \$14



Burnisher(small)  
F-031 \$19



Oyumaru  
F-047 \$6



Rubber Block  
(2" cube)  
F-019 \$10



Core Cork Clay  
F-044 \$14



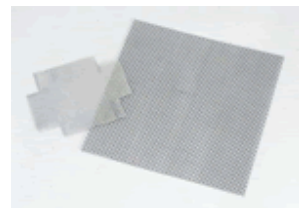
Heat Oyumaru in 80°C hot water for 3 minutes. Press piece to be duplicated into the softened Oyumaru. Leave until Oyumaru is cool and firm. Remove original.



Mold is now ready to use. Press Art Clay Silver clay type into the mold and allow to harden. Remove carefully and finish as desired. To reuse Oyumaru, return to 80°C hot water until softened again.



Use for forming hollow patterns. Model into any shape and make an excellent internal structure for Art Clay. Burns away during firing.



Stainless steel net & protection net  
F-018b \$16



Prices are GST inclusive.  
All prices may be varied without notice.  
CATALOGUE VOL4, 2012  
©SILVERLAB PTY LTD 2008. All rights reserved.